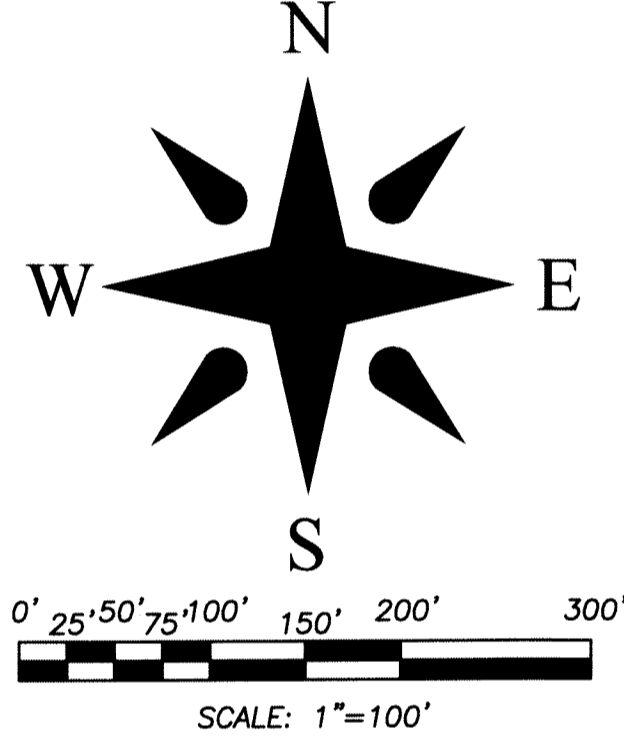
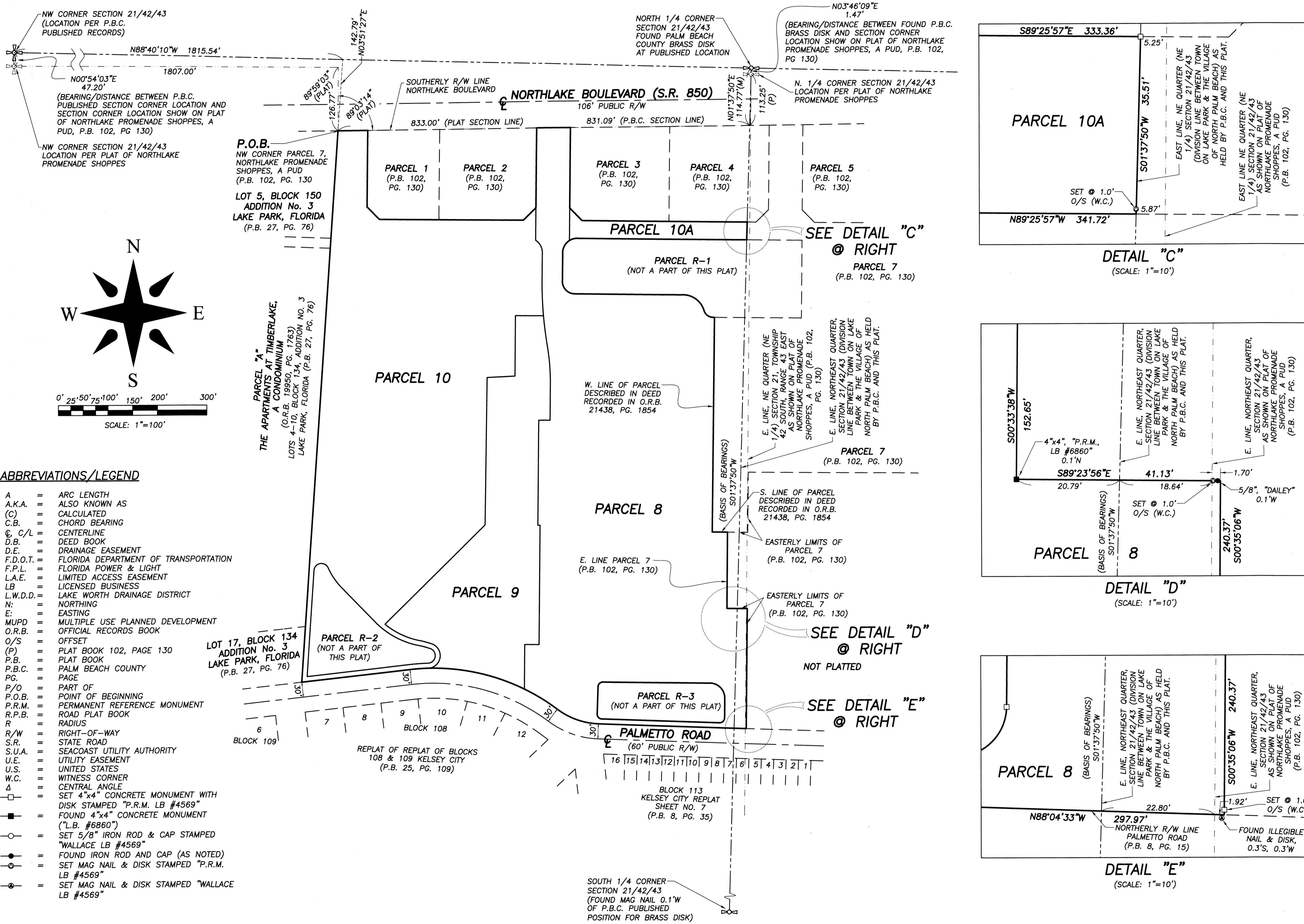
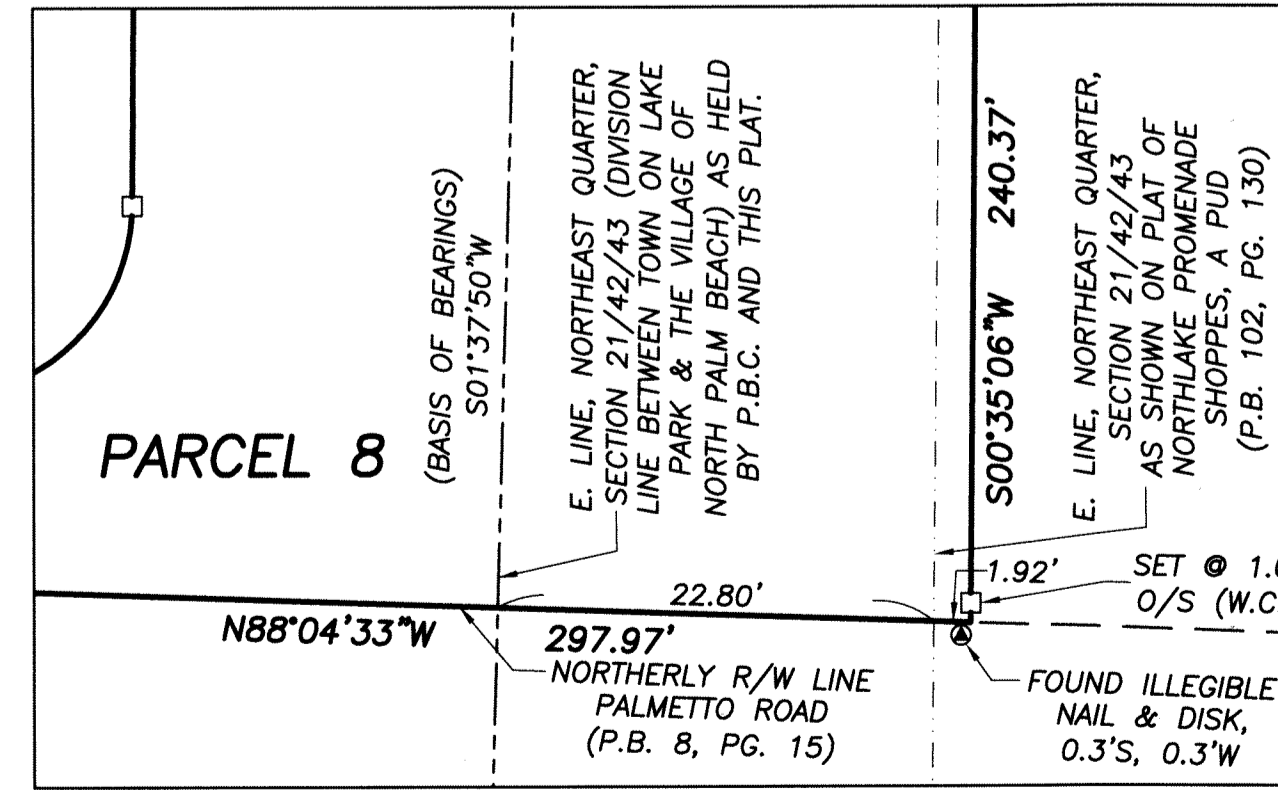
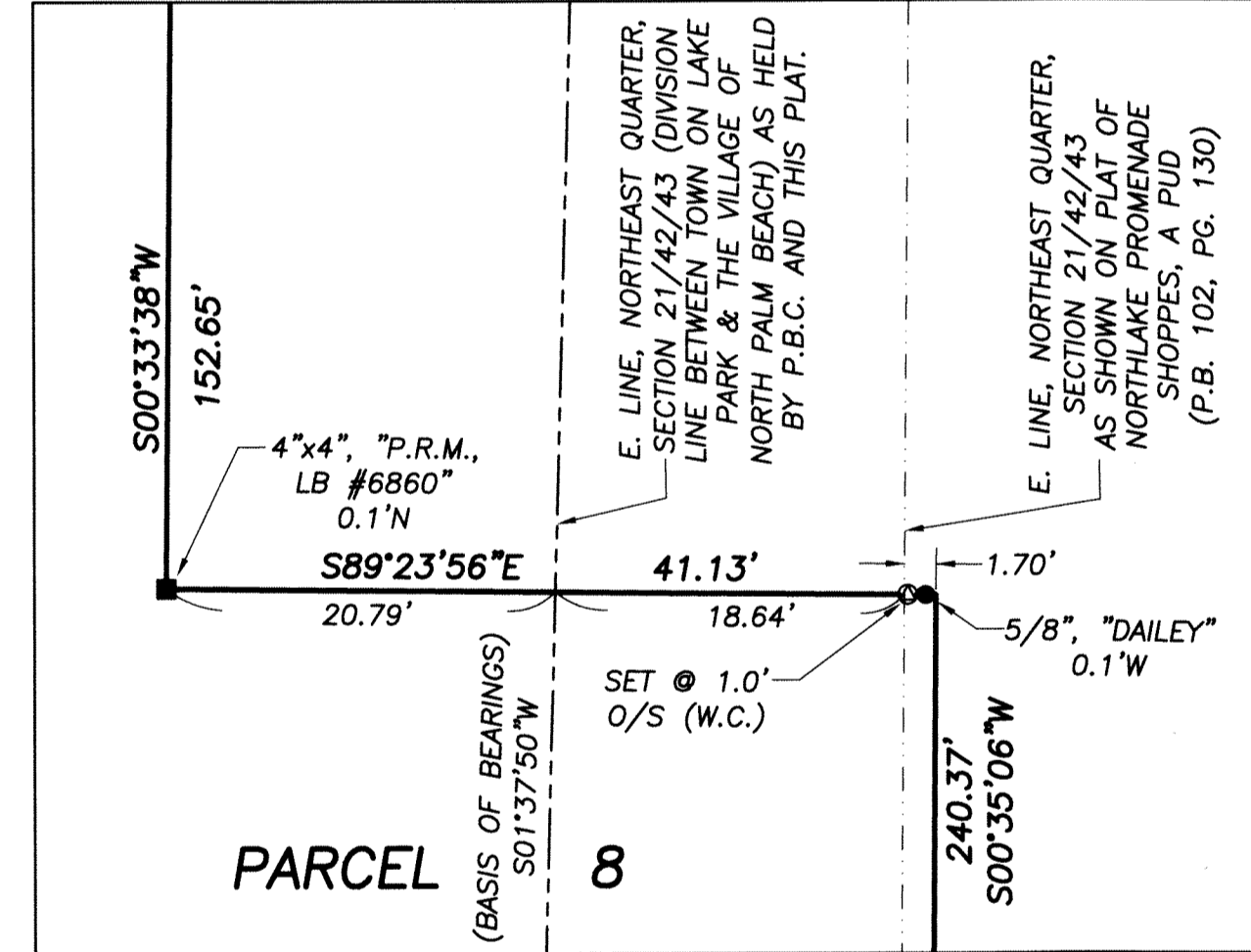
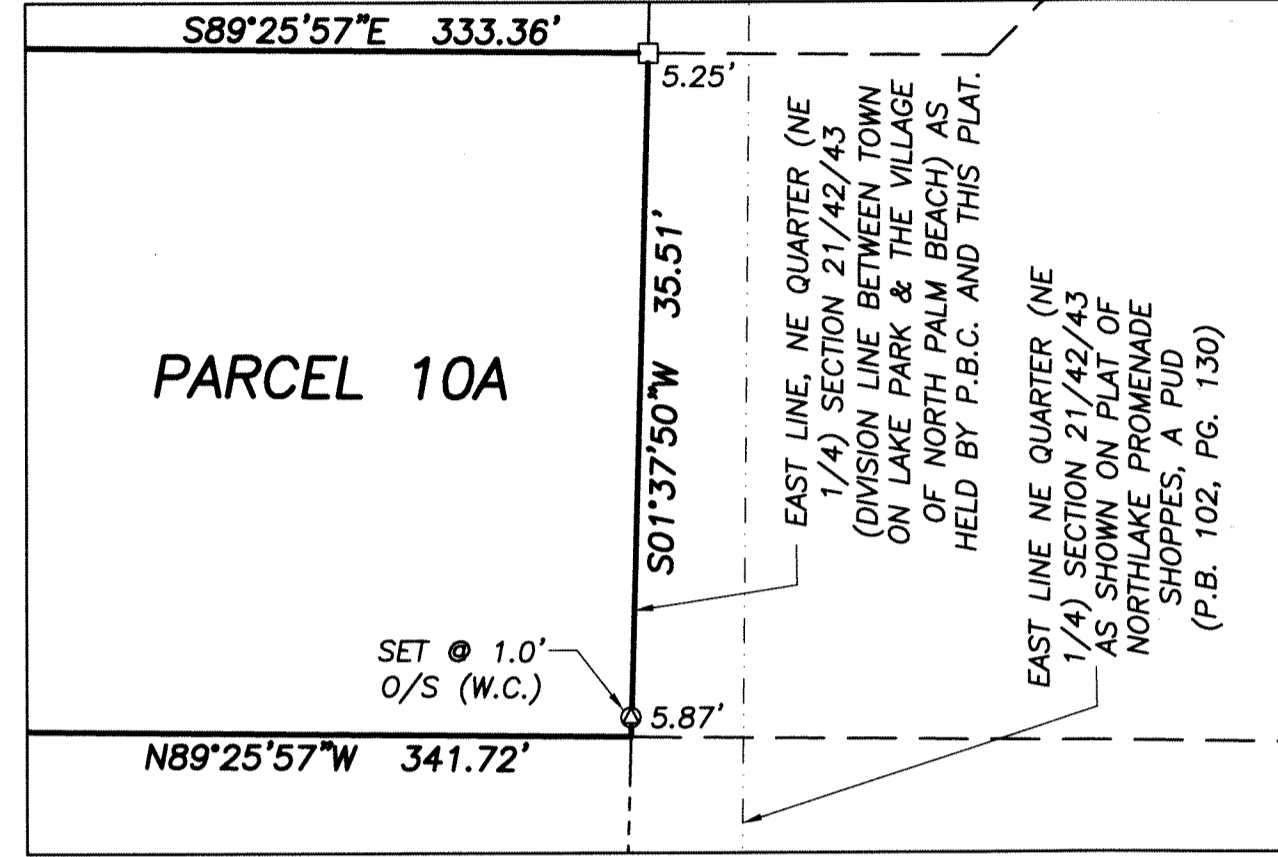


NORTHLAKE PROMENADE SHOPPES, A PUD, REPLAT No. 1

Being a replat of a portion of Parcel 7, NORTHLAKE PROMENADE SHOPPES, a PUD, according to the Plat thereof, as recorded in Plat Book 102, Pages 130 and 131, of the Public Records of Palm Beach County, Florida, lying in Section 21, Township 42 South, Range 43 East, Town of Lake Park and the Village of North Palm Beach, Palm Beach County, Florida.



- ABBREVIATIONS/LEGEND**
- A = ARC LENGTH
 - A.K.A. = ALSO KNOWN AS
 - (C) = CALCULATED
 - C.B. = CHORD BEARING
 - Ⓞ, C/L = CENTERLINE
 - D.B. = DEED BOOK
 - D.E. = DRAINAGE EASEMENT
 - F.D.O.T. = FLORIDA DEPARTMENT OF TRANSPORTATION
 - F.P.L. = FLORIDA POWER & LIGHT
 - L.A.E. = LIMITED ACCESS EASEMENT
 - LB = LICENSED BUSINESS
 - L.W.D.D. = LAKE WORTH DRAINAGE DISTRICT
 - N = NORTHING
 - E = EASTING
 - MUPD = MULTIPLE USE PLANNED DEVELOPMENT
 - O.R.B. = OFFICIAL RECORDS BOOK
 - O/S = OFFSET
 - (P) = PLAT BOOK 102, PAGE 130
 - P.B. = PLAT BOOK
 - P.B.C. = PALM BEACH COUNTY
 - PG. = PAGE
 - P/O = PART OF
 - P.O.B. = POINT OF BEGINNING
 - P.R.M. = PERMANENT REFERENCE MONUMENT
 - R.P.B. = ROAD PLAT BOOK
 - R = RADIUS
 - R/W = RIGHT-OF-WAY
 - S.R. = STATE ROAD
 - S.U.A. = SEACOAST UTILITY AUTHORITY
 - U.E. = UTILITY EASEMENT
 - U.S. = UNITED STATES
 - W.C. = WITNESS CORNER
 - Δ = CENTRAL ANGLE
 - = SET 4"x4" CONCRETE MONUMENT WITH DISK STAMPED "P.R.M. LB #4569"
 - = FOUND 4"x4" CONCRETE MONUMENT ("L.B. #6860")
 - = SET 5/8" IRON ROD & CAP STAMPED "WALLACE LB #4569"
 - = FOUND IRON ROD AND CAP (AS NOTED)
 - ⊙ = SET MAG NAIL & DISK STAMPED "P.R.M. LB #4569"
 - ⊙ = SET MAG NAIL & DISK STAMPED "WALLACE LB #4569"



**NORTHLAKE PROMENADE SHOPPES,
A PUD, REPLAT No. 1**

WALLACE SURVEYING
CORP. LICENSED BUSINESS # 4569
5553 VILLAGE BOULEVARD, WEST PALM BEACH, FLORIDA 33407 • (561) 640-4451

FIELD:	JOB No.: 16-1594.9	F.B. PG.
OFFICE: R.C.	DATE: DECEMBER 2016	DWG. No.: 16-1594-7
CK'D:	REF: 16-1594.DWG	SHEET 3 OF 3